

OpreX™ Measurement

Power monitoring package SMARTDAC+ GM / UPM100



“Yokogawa's easy to install

The power monitoring package is an energy saving data acquisition system for monitoring that comprises the GM Data Acquisition System and the UPM100 Power Monitor. The package enables visualization (graphical) of power usage in factories, reports, and other features that help you identify areas of wasted power.

Features

- ✓ Simple wizard-based system configuration
- ✓ Compact configuration by package
- ✓ Monitoring from anywhere via the web
- ✓ System configured for highly scalable I/O



solution saves energy”

Data Logging Software GA10 (Integrated Monitoring Software)



Aggregate monitoring of multiple groups
Monitor up to 2000 items

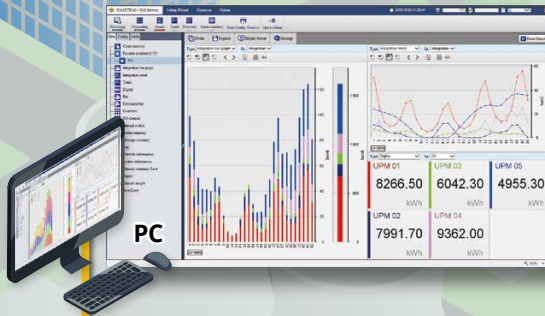


Easily visualize with custom graphics
Customize your display screens
Easy-to-understand Visualization of your power usage



Support peak-cutting with demand monitoring
Graphically display demand power and set alarm notifications

Data Monitoring with the web application. (Internal network)



On Universal Viewer, you can create hourly and daily reports of integral values of watt hours.

*Max. measurable points with SMARTDAC + 1 GM: 30 units



Sets up easily with the wizard-based Hardware Configurator.

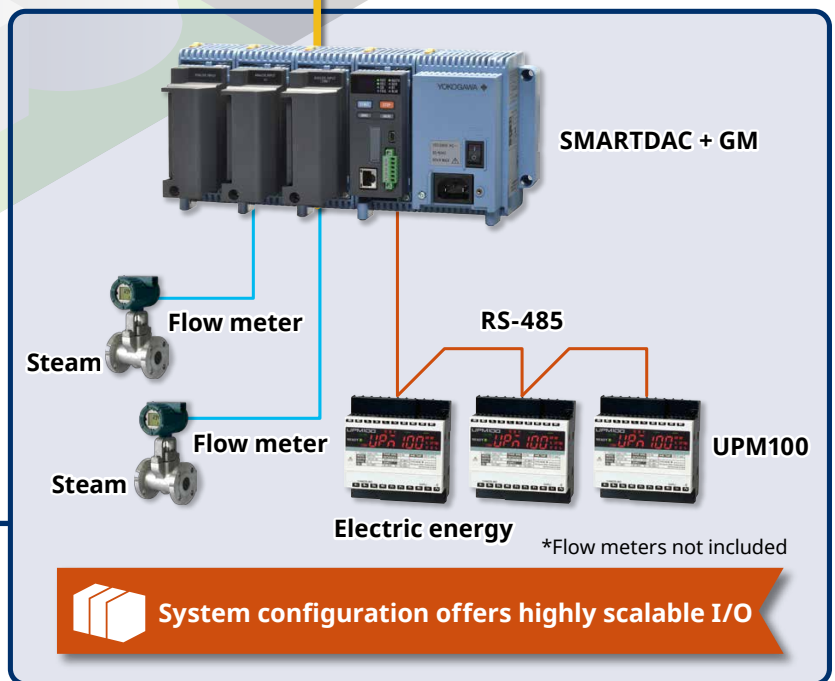
Monitoring room

Office

Ethernet



Factory B



System configuration offers highly scalable I/O

monitoring package

Power monitoring package

Model code selection tool

1. On the web

Download the model code selection tool (Excel file) from our website.



<http://www.yokogawa.com/ns/upm100pkg/>

2. Select Mode and Suffix Code

Enter the phase/wire format, rated voltage, primary side current, and options for display/pulse output, and then determine the format of the model to purchase and the number of units.

Model code selection tool (Excel) ▶

Package contents

GM Data Acquisition

GM10, 1 unit (Required option codes /MT, /MC, /WH^{2,3})
 GM10 power supply (Model: GM90PS), 1 unit¹
 (Required option codes /WH)
 GM10 module base
 (Model: GM90MB), 1 unit



GM10, power supply,
and module base combined.

Power monitors

UPM100⁴



Clamp-on Current Transformers

CTW15 / CTW35 / CTW10 /
 CTW20 / CTW100 / CTW130⁴



Please specify GM model code depending on the number of UPM100 to be connected and computation function to be used such as demand calculation.

Model	Connected number of UPM100 (units)	Calculation
GM10-1 (Standard type)	1 to 20	Not expandable
GM10-2 (Large memory type)	1 to 30	Use demand calculation etc.

Note: The power monitoring package does not conform to the safety standards (UL and CSA) and CE marking

1. Specify 100–240 VAC, 12–28 VAC.
2. Option code /WH cannot be combined with option code /AS.
3. If specifying option code /WH, the display language of the web application can only be English, Japanese, or Korean.
4. Required number of units specified by model code selection tool.

Related products

GA10

Data Logging Software

GA10



- Max. connectable units: 100
- Max. acquisition channels: 2000
- High speed acquisition: 100 ms (fastest)

Ethernet or serial



VJET

Ethernet/RS-485 converter



All brand or product names of Yokogawa Electric Corporation in this bulletin are trademarks or registered trademarks of Yokogawa Electric Corporation. All other company brand or product names in this bulletin are trademarks or registered trademarks of their respective holders.

YOKOGAWA ELECTRIC CORPORATION

Edge Solution Sales Division
 E-mail: ns@cs.jp.yokogawa.com

<http://www.yokogawa.com/>

YOKOGAWA ENGINEERING ASIA PTE. LTD.

<http://www.yokogawa.com/sg/>

YOKOGAWA INDIA LTD.

<http://www.yokogawa.com/in/>

YOKOGAWA TAIWAN CORPORATION

<http://www.yokogawa.com/tw/>

Subject to change without notice
 All Rights Reserved. Copyright © 2018, Yokogawa Electric Corporation

AZ-S-3E-A
 Printed in Japan, 103(AZ) [Ed:02/d]